



G3BP2 Polyclonal Antibody

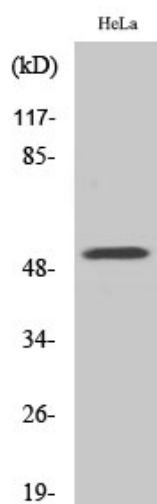
Catalog No	YP-Ab-16158
Isotype	IgG
Reactivity	Human;Mouse
Applications	WB;ELISA
Gene Name	G3BP2
Protein Name	Ras GTPase-activating protein-binding protein 2
Immunogen	The antiserum was produced against synthesized peptide derived from human G3BP2. AA range:433-482
Specificity	G3BP2 Polyclonal Antibody detects endogenous levels of G3BP2 protein.
Formulation	Liquid in PBS containing 50% glycerol, 0.5% BSA and 0.02% sodium azide.
Source	Polyclonal, Rabbit,IgG
Purification	The antibody was affinity-purified from rabbit antiserum by affinity-chromatography using epitope-specific immunogen.
Dilution	Western Blot: 1/500 - 1/2000. ELISA: 1/10000. Not yet tested in other applications.
Concentration	1 mg/ml
Purity	≥90%
Storage Stability	-20°C/1 year
Synonyms	G3BP2; KIAA0660; Ras GTPase-activating protein-binding protein 2; G3BP-2; GAP SH3 domain-binding protein 2
Observed Band	55kD
Cell Pathway	Cytoplasm . Cytoplasm, Stress granule .
Tissue Specificity	B-cell,Brain,Colon carcinoma,Epithelium,Lung carcinoma,Ovarian carc
Function	function:Probable scaffold protein that may be involved in mRNA transport .,PTM:Arg-457 and Arg-468 are dimethylated, probably to asymmetric dimethylarginine.,similarity:Contains 1 NTF2 domain.,similarity:Contains 1 RRM (RNA recognition motif) domain.,subunit:Binds to the N-terminal domain of I-kappa-B-alpha.,
Background	function:Probable scaffold protein that may be involved in mRNA transport .,PTM:Arg-457 and Arg-468 are dimethylated, probably to asymmetric dimethylarginine.,similarity:Contains 1 NTF2 domain.,similarity:Contains 1 RRM (RNA recognition motif) domain.,subunit:Binds to the N-terminal domain of I-kappa-B-alpha.,
matters needing attention	Avoid repeated freezing and thawing!



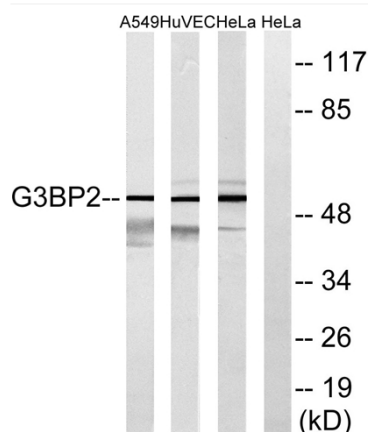
Usage suggestions

This product can be used in immunological reaction related experiments. For more information, please consult technical personnel.

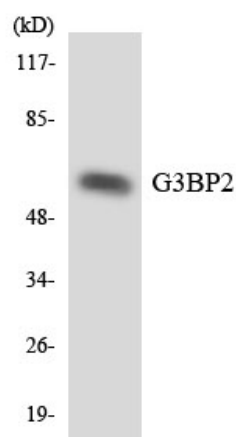
Products Images



Western Blot analysis of various cells using G3BP2 Polyclonal Antibody



Western blot analysis of lysates from HeLa, HUVEC, and A549 cells, using G3BP2 Antibody. The lane on the right is blocked with the synthesized peptide.



Western blot analysis of the lysates from HeLa cells using G3BP2 antibody.